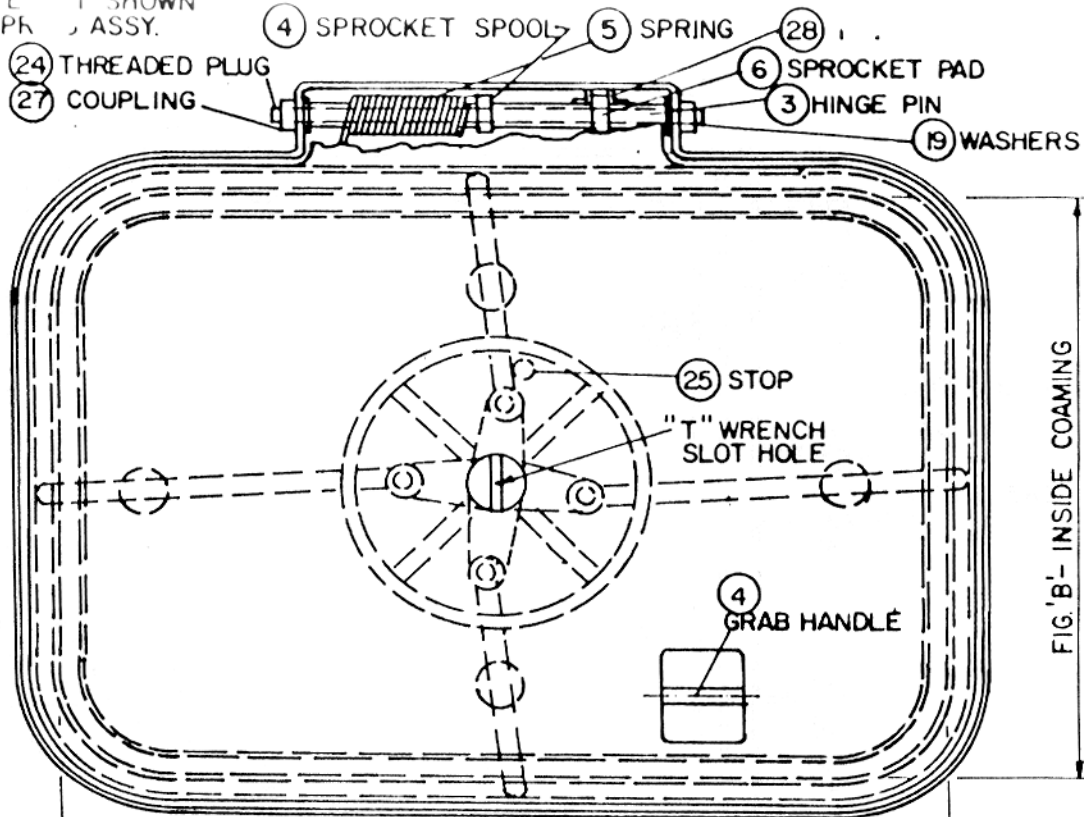
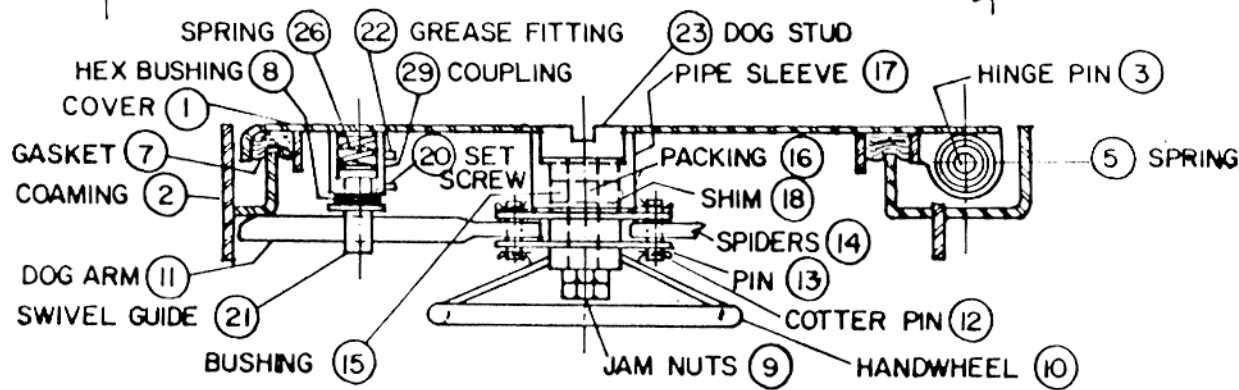


COVER PLATE IS SHOWN TO SHOW SPRING ASSY.



PLAN

FIG. 'A' - INSIDE COAMING



SECTION

SCHEDULE OF MATERIALS

PC. NO.	MATERIAL	REMARKS
1	MILD STEEL	
2	MILD STEEL	
3	COLD FINISH	
4	MILD STEEL	
5	SPRING STL.	
6	MILD STEEL	
7	NEOPRENE	
8	MILD STEEL	
9	STEEL	
10	ALUMINIUM	
11	COLD FINISH	
12	STAINLESS	
13	BRASS	
14	MILD STEEL	
15	DELFIN	
16	GRAPHITE	
17	COLD FINISH	
18	STAINLESS	
19	STAINLESS	
20	MILD STEEL	
21	BRASS	
22	PLATED	
23	BRASS	
24	MILD STEEL	
25	MILD STEEL	
26	SPRING STL.	
27	MILD STEEL	
28	MILD STEEL	
29	MILD STEEL	

Marine & Construction Supplies
 2312 N.W. 98th Street
 Seattle, WA 98117 - (206) 782-8822
 FAX (206) 782-9352

Marine & Construction Supplies

Seattle, Washington

QUICK ACTING WATERTIGHT FLUSH HATCH
 WITH RECESSED SPRING

MCS 2219