

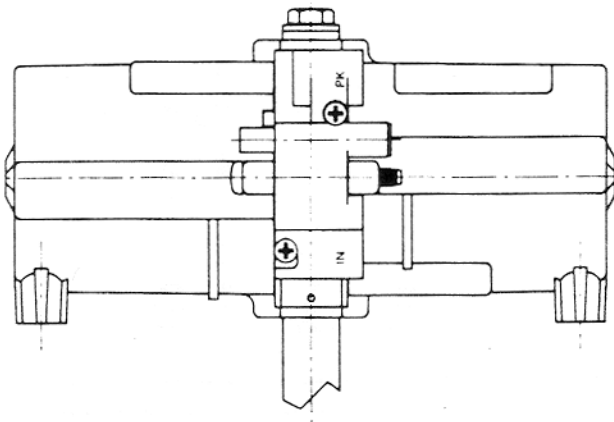
# SPRAGUE DEVICES, INC.

# HP-200 AIR WIPER MOTOR

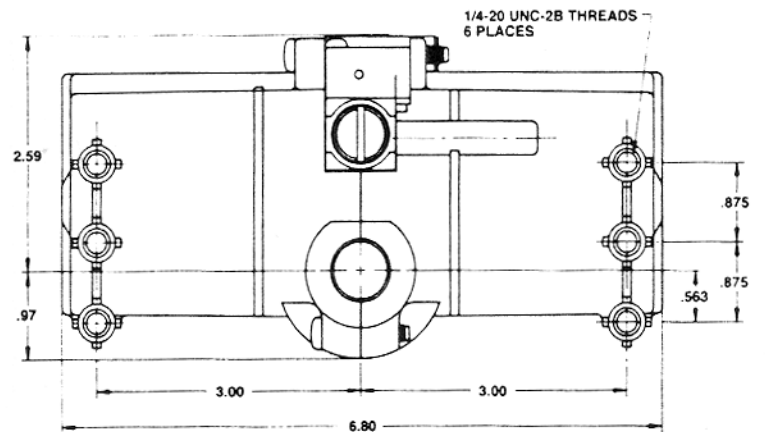
## SPECIFICATIONS

### DETAIL DRAWINGS

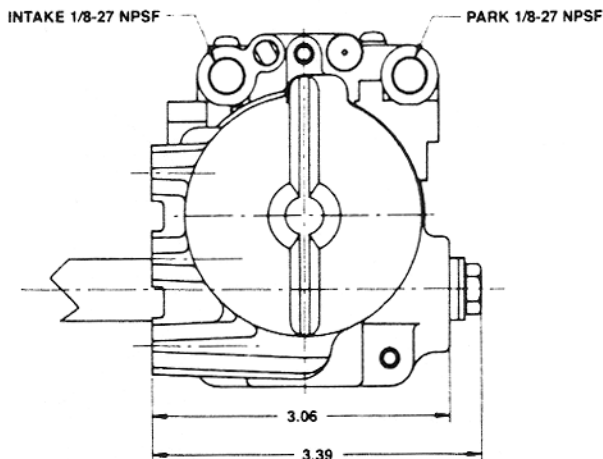
TOP VIEW



FRONT VIEW

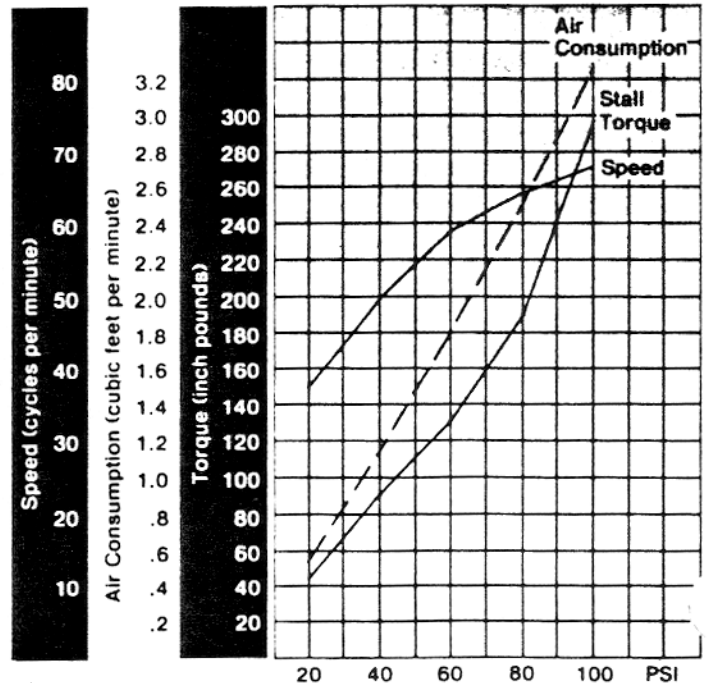


END VIEW



### CFM, CPM AND STALL

Maximum C.F.M., C.P.M. and Stall Torque 130° HP-200

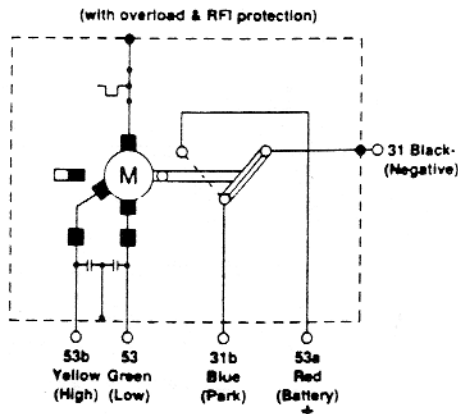


**Distributed by**  
**Marine & Construction Supplies**  
 2312 N.W. 98<sup>th</sup> Street  
 Seattle, WA 98117 - (206) 782-8822  
 FAX (206) 782-9352  
[www.marine-doors-hatches.com](http://www.marine-doors-hatches.com)  
 e-mail: [quotereq@marine-doors-hatches.com](mailto:quotereq@marine-doors-hatches.com)

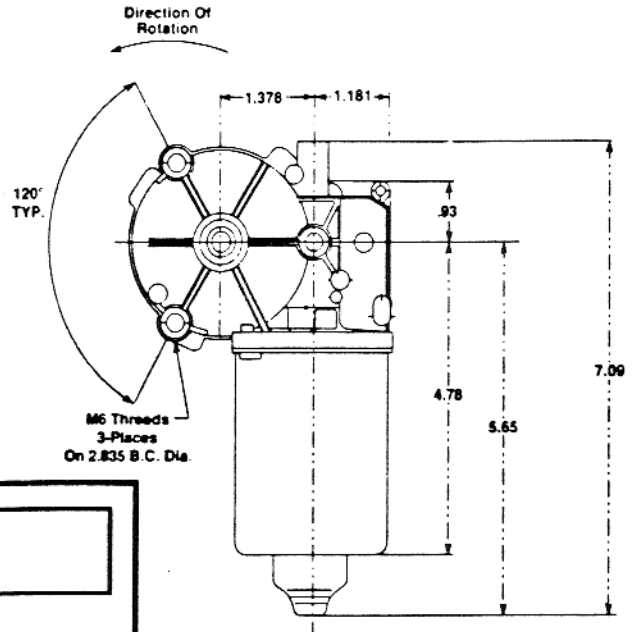
# SPRAGUE DEVICES, INC.

# SW2K-WINDSHIELD WIPER MOTOR SPECIFICATIONS

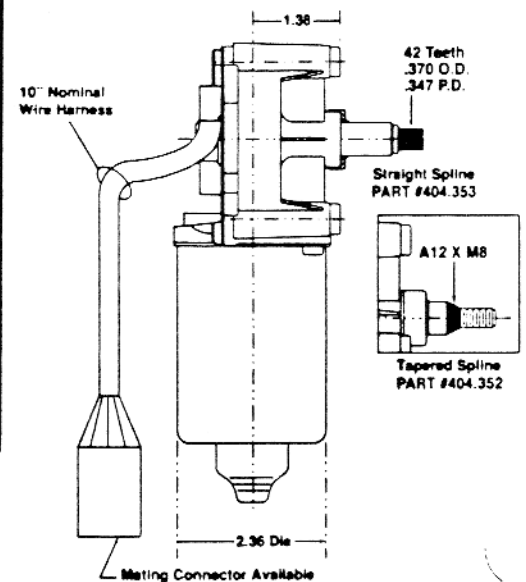
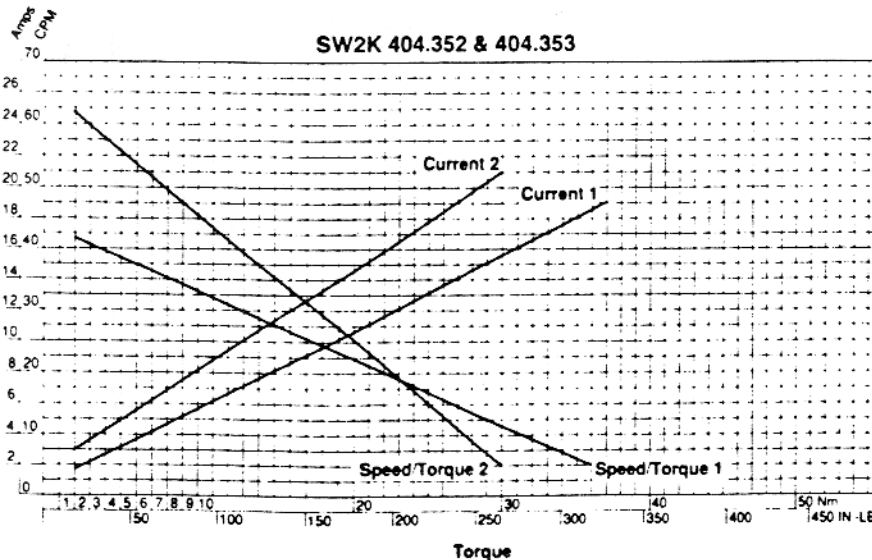
## CIRCUIT DIAGRAM



## DETAIL DRAWINGS



## TORQUE TESTING



Distributed by  
**Marine & Construction Supplies**  
 2312 N.W. 98<sup>th</sup> Street  
 Seattle, WA 98117 - (206) 782-8822  
 FAX (206) 782-9352  
 www.marine-doors-hatches.com  
 e-mail: quotereq@marine-doors-hatches.com